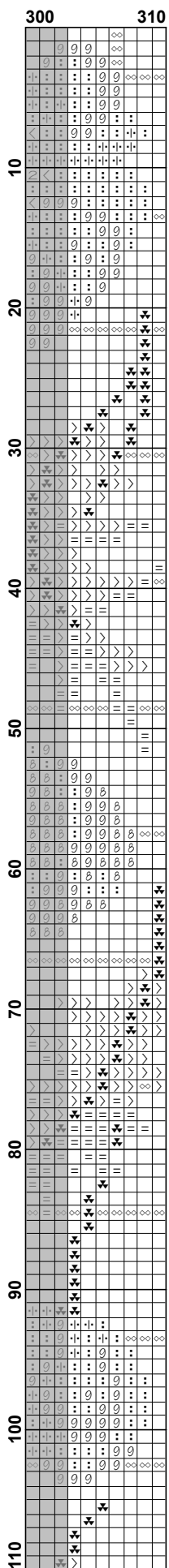


	10	20	30	40	50	60	70
10							
20							
30							
40							
50							
60							
70							
80							
90							
100							
110							

	80	90	100	110	120	130	140	150
10	>	>	>	>	>	>	>	>
20	>	>	>	>	>	>	>	>
30	>	>	>	>	>	>	>	>
40	>	>	>	>	>	>	>	>
50	>	>	>	>	>	>	>	>
60	>	>	>	>	>	>	>	>
70	>	>	>	>	>	>	>	>
80	>	>	>	>	>	>	>	>
90	>	>	>	>	>	>	>	>
100	>	>	>	>	>	>	>	>
110	>	>	>	>	>	>	>	>

	150	160	170	180	190	200	210	220
10
20
30
40
50
60
70
80
90
100
110

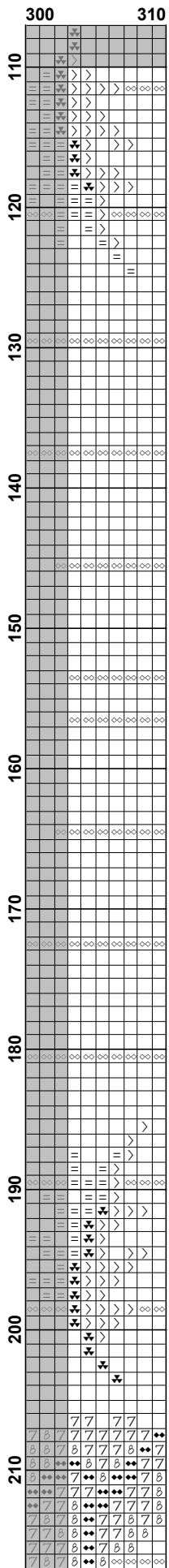


	10	20	30	40	50	60	70
110							
120							
130							
140							
150							
160							
170							
180							
190							
200							
210							

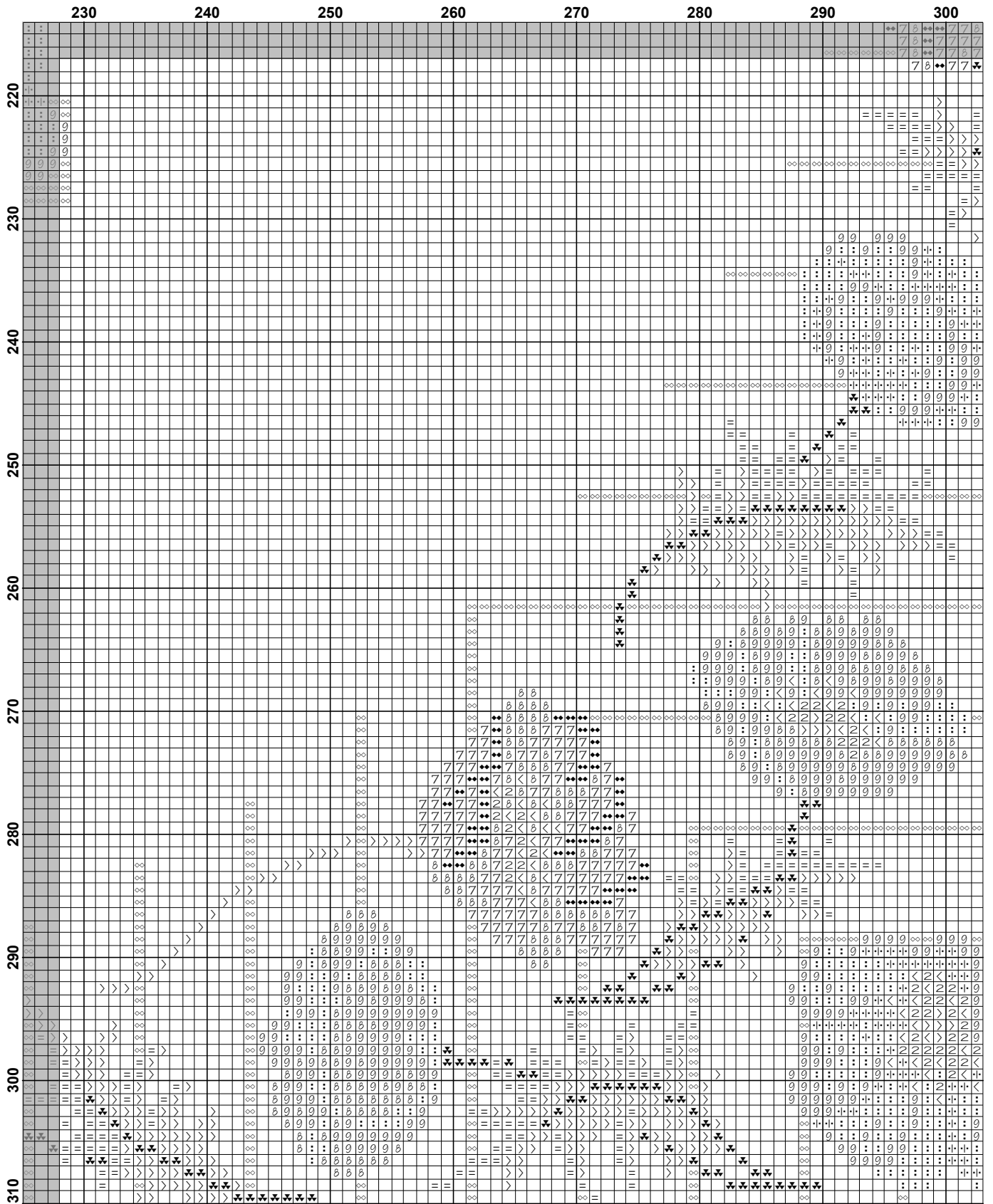
	80	90	100	110	120	130	140	150
110								
120								
130								
140								
150								
160								
170								
180								
190								
200								
210								

	150	160	170	180	190	200	210	220
110								
120								
130								
140								
150								
160								
170								
180								
190								
200								
210								

	230	240	250	260	270	280	290	300
110	⊗	⊗	⊗	⊗	⊗	⊗	⊗	⊗
120	⊗	⊗	⊗	⊗	⊗	⊗	⊗	⊗
130	⊗	⊗	⊗	⊗	⊗	⊗	⊗	⊗
140	⊗	⊗	⊗	⊗	⊗	⊗	⊗	⊗
150	⊗	⊗	⊗	⊗	⊗	⊗	⊗	⊗
160	⊗	⊗	⊗	⊗	⊗	⊗	⊗	⊗
170	⊗	⊗	⊗	⊗	⊗	⊗	⊗	⊗
180	⊗	⊗	⊗	⊗	⊗	⊗	⊗	⊗
190	⊗	⊗	⊗	⊗	⊗	⊗	⊗	⊗
200	⊗	⊗	⊗	⊗	⊗	⊗	⊗	⊗
210	⊗	⊗	⊗	⊗	⊗	⊗	⊗	⊗




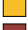



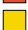






The image displays a large square tablecloth pattern grid. The grid is composed of columns and rows, with columns labeled at the top as 10, 20, 30, 40, 50, 60, and 70, and rows labeled on the left as 220, 230, 240, 250, 260, 270, 280, 290, 300, and 310. The pattern is highly detailed and repetitive, featuring a variety of symbols such as asterisks, numbers (e.g., 9, 8, 7, 6, 5, 4, 3, 2, 1), and geometric shapes (e.g., triangles, squares, diamonds) arranged in a complex, repeating sequence. The symbols are distributed across the grid, creating a dense and intricate design. The overall appearance is that of a traditional or decorative tablecloth pattern.



Pattern Name: square tablecloth
Fabric: Aida 14, Cream
 310w X 310h Stitches
Size(s): 14 Count, 56.24w X 56.24h cm
 16 Count, 49.21w X 49.21h cm
 18 Count, 43.74w X 43.74h cm
 11 Count, 71.58w X 71.58h cm

Floss Used for Full Stitches:

	Symbol	Strands	Type	Number	Color
	<	2	DMC	208	Lavender-VY DK
	2	2	DMC	310	Black
	:	2	DMC	666	Christmas Red-BRT
	8	2	DMC	742	Tangerine-LT
	· ·	2	DMC	816	Garnet
	∞	2	DMC	822	Beige Gray-LT
	∇	2	DMC	937	Avocado Green-MD
	9	2	DMC	947	Burnt Orange
	7	2	DMC	973	Canary-BRT
	>	2	DMC	3053	Green Gray
	◆◆	2	DMC	3078	Golden Yellow-VY LT
	=	2	DMC	3348	Yellow Green-LT